



IDENTIFICATION

NAME

E. M. O'Leary

RESIDENCE

TOWN AND STATE

MY WEIGHT IS _____ LBS.

HEIGHT _____ FEET _____ INCHES

IN CASE OF ACCIDENT NOTIFY:

TABLE OF CONTENTS

President's Greeting to Juniors.
A History of the School.
School Songs and Yells.
The School Year of 1914-1915.
Junior Greeting.
Junior Class Officers and Committees.
School Organizations.
Forum Athenaeum.
Glee Club.
Ohiyesa.
Arena.
Treble Clef.
Home Economics.
Y. W. C. A.
Dramatic Club.
Orchestra.
Stevens Point Churches.
Simple Candy Recipes.
Chafing Dish Recipes.
Junior Debates.
Oratorical Contest.
Our New Addition.
The D. S. Course.
Our Faculty.
Athletics.
Football.
Basketball.
Baseball.
Track.
Girls' Athletics.
Advice to Juniors.
The Lecture Course.
School Visitors.
The Enrollment.
The D. S. Cottages.
New Members of the Faculty.
Addresses.

HAND BOOK

OF

S. P. N.

PRESENTED BY THE
JUNIOR CLASS
OF THE
STEVENS POINT
NORMAL

1915

CALENDAR-1915

JANUARY.								JULY.							
S	M	T	W	T	F	S		S	M	T	W	T	F	S	
..	1	2	1	2	3	..
3	4	5	6	7	8	9	4	4	5	6	7	8	9	10	..
10	11	12	13	14	15	16	11	11	12	13	14	15	16	17	..
17	18	19	20	21	22	23	18	18	19	20	21	22	23	24	..
24	25	26	27	28	29	30	25	25	26	27	28	29	30	31	..
31

FEBRUARY.								AUGUST.							
S	M	T	W	T	F	S		S	M	T	W	T	F	S	
..	1	2	3	4	5	6	1	1	2	3	4	5	6	7	..
7	8	9	10	11	12	13	8	8	9	10	11	12	13	14	..
14	15	16	17	18	19	20	15	15	16	17	18	19	20	21	..
21	22	23	24	25	26	27	22	22	23	24	25	26	27	28	..
28	29	29	30	31
..

MARCH.								SEPTEMBER.							
S	M	T	W	T	F	S		S	M	T	W	T	F	S	
..	1	2	3	4	5	6	1	2	3	4	..
7	8	9	10	11	12	13	5	5	6	7	8	9	10	11	..
14	15	16	17	18	19	20	12	12	13	14	15	16	17	18	..
21	22	23	24	25	26	27	19	19	20	21	22	23	24	25	..
28	29	30	31	26	26	27	28	29	30
..

APRIL.								OCTOBER.							
S	M	T	W	T	F	S		S	M	T	W	T	F	S	
..	1	2	3	1	2	..
4	5	6	7	8	9	10	3	3	4	5	6	7	8	9	..
11	12	13	14	15	16	17	10	10	11	12	13	14	15	16	..
18	19	20	21	22	23	24	17	17	18	19	20	21	22	23	..
25	26	27	28	29	30	..	24	24	25	26	27	28	29	30	..
..	31	31

MAY.								NOVEMBER.							
S	M	T	W	T	F	S		S	M	T	W	T	F	S	
..	1	1	2	3	4	5	6	..
2	3	4	5	6	7	8	7	7	8	9	10	11	12	13	..
9	10	11	12	13	14	15	14	14	15	16	17	18	19	20	..
16	17	18	19	20	21	22	21	21	22	23	24	25	26	27	..
23	24	25	26	27	28	29	28	28	29	30
30	31

JUNE.								DECEMBER.							
S	M	T	W	T	F	S		S	M	T	W	T	F	S	
..	..	1	2	3	4	5	1	2	3	4	..
6	7	8	9	10	11	12	5	5	6	7	8	9	10	11	..
13	14	15	16	17	18	19	12	12	13	14	15	16	17	18	..
20	21	22	23	24	25	26	19	19	20	21	22	23	24	25	..
27	28	29	30	26	26	27	28	29	30	31
..

PRESIDENT'S GREETING.

TO THE JUNIORS:

The great sculptor, Augustus St. Gaudius, ascribed his success to his interpretation of Phillips Brooks' utterance, "Pray to be strong men. Pray not for tasks equal to your powers, but for powers equal to your tasks. Then your work shall be no miracle, but you will be a miracle."

The young men and women of the Junior class are daily diligent in the pursuit of excellence. They are striving thru self-activity in the succession and successful mastering of tasks, to form in themselves those habits whose resultant will be a character that reveals itself in doing things—doing things thoroughly and on time, two of the most important functions any one is called upon to exercise.

Working under the direction of a sympathetic, efficient and enthusiastic faculty every member of the Junior class must appreciate his responsibility for the honorable discharge of every obligation imposed. Let every member see to it, that no one else performs the duties involved better than he. Let each feel that when the assigned task is completed or the obligation discharged that nothing else remains to be done.

To be faithful in few things and in little things means that later you will be ruler over large things and many things. In no other way will you secure powers equal to your tasks—the consummation so devoutly to be wished. Work with loyalty and devotion in this spirit for yourself, your school, your country, and your God, and the laurel of true success will crown your every effort.

Cordially yours,

JOHN F. SIMS, President.

HISTORY OF S. P. N.

The Stevens Point Normal School, the sixth to be established in this state, was voted upon at Madison on July 22, 1893, and secured largely thru the efforts of Judge B. B. Park, one of our legislators.

The building was ready for use on September 17, 1894. The dedication took place on the eighth of October. At first there was only the middle section, the west wing not being added until some time later. The building is of Black River Falls pressed brick with white terra cotta trimmings, and a foundation of cream-colored sandstone. The basement was taken up by the boiler and fuel rooms, the floor of the gymnasium and the various dressing and bath rooms. On the first floor were the Model School and Domestic Department. The second floor was occupied by the Normal School Department, and third floor by the science laboratories and class rooms.

In 1901 the west wing was completed, which gave the now adequate Manual Training Department in the basement, the Intermediate and Grammar grade rooms on the first floor, and on the second floor another assembly room and the Art Studio. On the third floor are the art annex and museum and the various organizations and club rooms.

In 1913 an appropriation was made and secured for the erection of the new east wing, on which the work is rapidly progressing, and two model cottages for the use of Domestic Science girls. The additions, which will furnish us with an auditorium and new Domestic Science department, will be completed in February of 1915. Another important addition to be erected in the near future will be a dormitory for the girls of the school, for which an appropriation of a hundred thousand dollars was made in the fall of 1913.

At the beginning of the school there were installed six courses: An elementary course of two years, an English scientific course of four years, a Latin course and a German

HAND BOOK OF S. P. N.

course of four years, a one-year professional course, and a one-year common school course. By the year 1900 the number of courses was increased to ten, those being added were, a four-year English course, an advanced post graduate course of one year, a Domestic Science course and a Manual Training course.

In 1912 was introduced a two-year course for Rural School Teachers.

Up to the present time the school has been divided up into terms of ten weeks each. This year, however, that order has been modified, the school year consisting of four quarters of nine weeks each, and a nine-weeks summer school.

The only two members of the faculty who have been with the institution since its establishment are Professors Joseph V. Collins and Garry E. Culver. Other faithful faculty members who were early associated with the school are Professors F. N. Spindler, Miss Nannie Gray, and F. S. Hyer.

The first president of S. P. N. was Mr. Theron B. Pray, who remained with the school until 1906, and who was then succeeded by President John F. Sims.

Among the various organizations of the school is the Oratorical Association, which was founded in 1896, and which had charge of all interests relative to the Inter-Normal Oratorical League, joint debates and other literary contests. At first we held debates with Whitewater only. In 1898 was held our first debate with Oshkosh. The former gradually grew less frequent and finally ceased altogether.

The Athletic Association was organized at the start and was open to all who were interested. In the early days we met with Lawrence in field day sport.

Basketball and football teams were organized. Early in 1912 a regular athletic coach was installed, Mr. Schneller, under whose training basketball developed to a high degree of perfection. To our new coach of this year, Mr. G. D. Corneal, great credit is due for

HAND BOOK OF S. P. N.

bringing the football team up to a standard almost equal to that of the good old days of real playing, when Professor Spindler coached.

Tennis was organized in 1895, and last year interest in this sport was revived. A tournament being held in which much enthusiasm was shown.

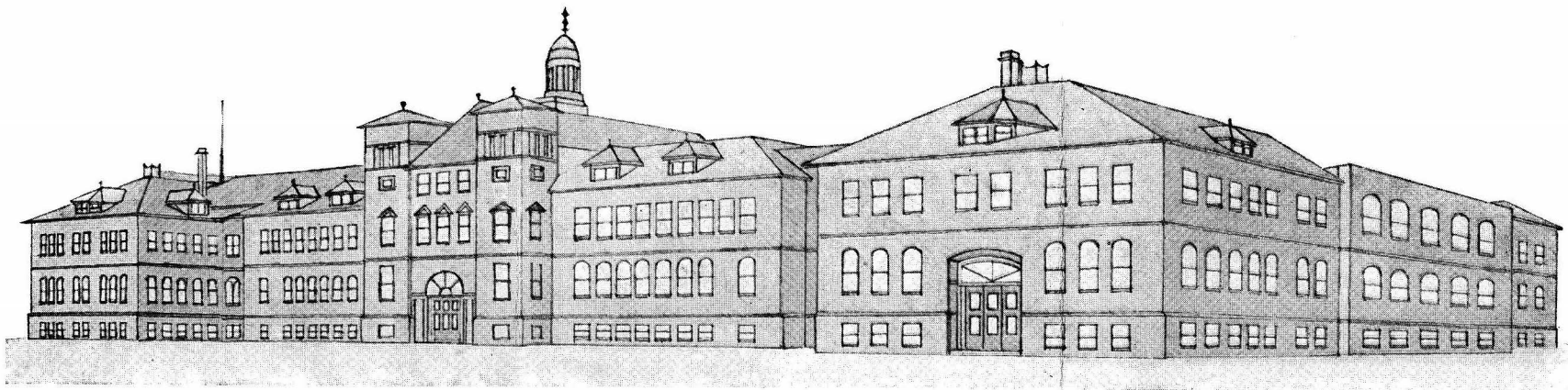
The first literary society to be organized was the Arena, still in existence. At first it was a mixed society, but in 1897-8 the men formed a separate organization, named after Dr. Charles Eastman, the Sioux Indian whose early name was Ohiyesa, meaning "Winner."

The Treble Clef Club for girls and Glee Club for boys were among our first organizations. The Y. W. C. A. was organized in 1902 and is growing rapidly. The clubs recently organized are the Dramatic Club, the Home Economics Club, and the Art Club. The two former were organized two years ago and the latter last year. Several other societies which lived for a short time were the St. Cecilia Music Club, the Vevo Club, the Sketch Club, the Geography Lyceum, the Browning Club, and the Hiker's Club.

By no means least in importance in the school life was the organization of the Press Association in 1895. The first issue of the Pointer came out in December of that year. This is distinctly a school paper, this year more than ever before, giving the school news and other matters of interest to the students.

The first year book was published under the name of "The Nautilus" in 1901. The next next two years saw no publication, because of financial difficulties. In 1905 the annual bore the name of "The Summum." The next year the title of "The Iris," chosen from the purple flower with the golden heart, was given to the book. That title has not changed.

When the school started there were students from twenty-five counties entered. This year students are enrolled from fifty-five counties, while we also have representatives from Michigan, Illinois, Iowa, and Minnesota.



STEVENS POINT NORMAL WITH ADDITION, 1914

SCHOOL SONGS

S. P. N. (JOLLY STUDENTS)

You may talk about your colleges
That thrive from coast to coast;
But we bespeak the Normal Schools
Of which Wisconsin boasts.
The azure flag of Platteville
And Milwaukee's white and green,
Superior's black and orange
Are on all occasions seen.
The gold and white for Oshkosh,
For La Crosse maroon and gray,
The red and white for River Falls,
Whitewater purple gray.
But here's the one that waves for us,
The purple and the gold.
So wave it high and wave it long,
The good old flag of old.

Chorus (Repeated).

For we are jolly students of our S. P. N.
We're here to win.
Our colors are purple and gold.
We'll make Wisconsin's Normals
All look up to us.
Rah! Rah! Rah!
Here's to S. P. N. of old.

We are scholars of no city,
Have no south, north, east or west,
We come to S. P. N. because
We know it is the best.
"Go forward" is our motto
And we're going all the time,
In work or play, from day to day,
We're heading every line.
Our orators are winners
Both in speeches and debate,
Our athletes are the strongest
And the surest in the state.
When they go out to battle
As the heroes did of old
The outside schools
Will doff their hats
To the purple and the gold.

Chorus.

HAND BOOK OF S. P. N.

THE PURPLE AND THE GOLD

Let other Normals boast
Of victories galore,
Of laurels never lost,
Of triumphs by the score.
Let them tell you of their prowess,
Of warriors strong and bold.
But their colors ever lower
To the Purple and the Gold.

Our men are all victorious
Thru 'every state around.
Our athletes and debaters
Are winning great renown.
Tho we're proud of all Wisconsin,
Whose fame in story's told,
Our hearts are with Stevens Point Normal
And the Purple and the Gold.

To the banks of the old Wisconsin,
When these years are past and gone,
When as schoolmates we have parted,
And our lessons are all done,
We'll return and show our comrades
We're as loyal as of old.
And cheer them on to victory,
'Neath the Purple and the Gold.

SCHOOL YELLS

The Point! The Point! Rah! Rah! Rah! Rah!
The Point! The Point! Rah! Rah! Rah! Rah!
U-Rah! U-Rah!
Stevens Point! Rah! Rah! Rah!

Ve! Ve! Ve! Vi! Vi! Vi!
Ve! Vi! Ve! Vi! Ve! Vi! Vum!
Rat trap, cat trap
Quicker than a steel trap
Cannibal Cannibal Zis, boom, bah!
Normal! Normal! Rah! Rah! Rah!
Who are? Who are? Who are we?
We are the Normal of S. P. T.
Razzle! Dazzle! Zis, boom, bah!
Normal! Normal! Rah! Rah! Rah!

Toothache, Toothache, hold my jaw,
Normal! Normal! Rah! Rah! Rah!

THE SCHOOL YEAR OF 1914-1915

Beginning September 14, 1914, The Normal school year will consist of two semesters of eighteen weeks each, to be followed immediately by a summer term of nine weeks. A large number of the regular Normal subjects will be offered, thus enabling students to finish their courses in a shorter time.

Enrollment, Monday and Tuesday.....	September 14 and 15
.....	September 14 and 15
Class meet Wednesday.....	September 16
Christmas Vacation begins,	
Wednesday Evening.....	December 23
Classes resume, Monday.....	January 4
Second Semester begins, Monday..	January 25
Easter Recess, Good Friday and Easter	
Monday.	
Second Semester ends, Thursday.....	June 3
Summer Term begins, Monday.....	June 7
Summer Term ends.....	August 6

Students are urged to enroll at the beginning of the summer term. They may enroll at other times, preferably November 16 or March 29, these being the mid-semester dates for the first and second semesters respectively.



GREETINGS!

We have enrolled in our class this year the largest number of students ever enrolled in any class at S. P. N. One hundred and forty-three loyal Juniors. From all parts of this state have come students who heard of S. P. N.'s fame, and decided that this was the proper place for them. We welcome you with open arms, and hope that satisfaction and benefits will be showered upon you, and that in the future you will give the school something. We hope you will do anything along material lines, and you to give it the best that you can. It may seem quite easy to slide through our work half done, but remember that every slip you are guilty of will pay dearly when you get into the real world, and have to prove your worth. It is the socially efficient character the world wants, and good character and ability are very essential, for a deficiency in either is quickly detected. When one is away from home he is subjected to many temptations, some of which are serious, and which are hard to overcome unless you rely on yourselves by being able to do the right thing, and you will have accomplished your purpose, but few people are really successful because they are misdirected. Therefore do what you can, and you will not only be an honor to yourself, but a shining example to others.

HAROLD BRADY.

**JUNIOR CLASS OFFICERS AND
COMMITTEES**

President HAROLD BRADY
Vice-President FRANK HYER
Secretary ALMA DUPRE
Treasurer ELIZABETH HATCH
Sergeant-at-Arms EMIL HAFSOOS

**COMMITTEE ON INCREASED
ATTENDANCE**

FRANK HYER, Chairman
PIERCE RIELLY
CECILE TODD
IRMA INGRAM
HAZEL FEREBY

COMMITTEE ON CLASS COLORS

EMIL HAFSOOS, Chairman
KATHRYN BALDWIN
LULU NEMACHEK
CHRISTINE DOOR

HAND BOOK OF S. P. N.

COMMITTEE ON DECORATIONS

HERBERT MARSH, Chairman
GLENN WARREN
SELMA JOHNSON
GRACE TAYLOR
SAM ELLIS
ETTA SCHUMWAY
HATTIE COHN

COMMITTEE ON CLASS PUBLICATIONS

HAROLD BRADY, Editor
EMIL HAFSOOS, Bus. Mgr.
INEZ SMITH
FRANK HYER
SAM ELLIS
ROBERT WOOD
HERBERT MARSH
VIOLA GUSTIN
CLARA HONESS
MISS PHELPS
BESSIE ONSEIN
HATTIE COHN
LULU NEMACHEK
HAZEL FEREBY
MISS HILL

SCHOOL ORGANIZATIONS

A great variety of student organizations exist, designed to meet the needs of the student body. Members of the faculty assist in many of these activities in a very able way, and by so doing the student and teacher are brought into cordial and intellectual contact which is beneficial to the student welfare.

The most prominent activities are:

1. The Literary Societies, of which the school has three, one open to men and two open to women students, which give public programs and social evenings each term, in addition to their regular Friday evening meetings.

2. The Oratorical Association, which holds an annual school contest in oratory; the winner going to the State Inter Normal Contest as a school representative.

3. The Junior Debate, between the Junior classes of the Stevens Point and Oshkosh Normal schools, gives vent to an increased class spirit and friendly competition.

4. Dramatics, consists of several short plays, given during the year by the Dramatic Club, and the Senior Class Play.

5. The Art Club, which meets two evenings a week for work in applied art.

6. Student Publications, including the Pointer, a weekly paper devoted to school interests, which is edited by students, and the school annual, the Iris, published by the Senior Class.

7. The Musical Clubs, which consist of the Treble Clef, or Girls' Glee Club, the Men's Glee Club, the school orchestra and the school band.

8. Athletics, in which both men and women participate. The Athletic Association supports football, basketball, and baseball, and track is fast becoming important. The tennis tournament also attracts the interest of many.

9. The Y. W. C. A., which holds meetings in which religious and social welfare topics are discussed and which gives entertainment that adds agreeable diversity to the social life of the school.

10. The Home Economics Club, organized by the students in the Domestic Science and Domestic Art Departments, holds regular meetings to study some phase of home economic work; and to promote sociability among its club members.

FORUM-ATHENAEUM

The Forum-Athnaeum is a literary society composed of the men of the Stevens Point Normal. Its object is the furtherance of all literary work in general and debating in particular. It is hoped that arrangements can be made this year for a debate between this society and the Lincolnian Society of the River Falls Normal. The society consists of from twenty to thirty active members and meets once a week to listen to programs rendered by its members. A public program is held each quarter and a joint program with the other societies every year. The public program for the first quarter was a mock trial, and the one for the second quarter will be a country school meeting.

Now for a word in regard to the history of the organization. Away back in the days when the school was young, four literary societies were organized, the Forum and the Athenaeum, the Forum and Athenaeum for men and the Arena and Ohiyesa for women. In 1911 these societies were combined as follows: The Forum-Arena, the Athenaeum-Ohiyesa. After one year they were separated and the two men's societies combined into the Forum-Athenaeum, the women's societies remaining separated.



GLEE CLUB

One of the chief features of the school is the Glee Club. This, of course, is an organization of the talented young men of the school, for the purpose of singing. This year the club was organized with about thirty members and unusual enthusiasm has been shown from the start.

Although the boys have not as yet appeared in public as a club, they are progressing rapidly under the competent leadership of our music director, Miss Baker. Their first appearance will be on Friday, the 18th of December, as the school will close for its Christmas vacation on that day. In the spring they will co-operate with the Treble Clef and render an evening's entertainment in the opera house. This is an annual event looked forward to by all members of the student body and faculty alike.

In all probability, the boys will sing before the student body a number of times this year, and perhaps some in connection with the girls' club.

The club has never been in a better condition, although a few more tenors could be used to a decided advantage. Those who are in the club are fine singers, and under the leadership of Miss Baker, sing for all there is in them. She makes quality instead of quantity. When both can be combined—so much the better.

There has been organized within the club, a quartette of excellent quality. These four boys have appeared before the student body a number of times, and also before the boys only, in the Forum-Athenaeum Society. Every one who has heard them knows that the quartette is a fine one. Each of the boys may be called on some morning in general exercises for a solo. To the boys: Be prepared.

THE OHIYESA

The Ohiyesa Society, organized in 1905, is one of the girls' literary societies of the school. This society, as the name signifies, was founded in commemoration of an Indian, Eastman by name. He was well educated, having all the good traits of an Indian instead of the bad, and the girls of the society try to instill into their lives those noble traits of the red man's character, and to give to the Indian race the glory which it reserves.

There are three purposes of the society. In the first place, it has a literary side. All the girls must appear on the program once or twice during a semester, this giving them practice in speaking in public. At the meetings of the society which are held every two weeks, a short time is spent in parliamentary practice, after which the literary program is given.

In the second place the society has a business aspect. Various plans are carried out to raise money. Recently the girls had charge of the Palace of Sweets for one Saturday, and about fifteen dollars was cleared. The society is now planning to present "Silas Marner" for their play this year.

In the third place there is a social side. Social meetings are held during the year and picnics and hikes are indulged in. These social features assist in helping new girls to become acquainted.

The initiation ceremony was held November 20. Over forty members were admitted to the society. The ceremony was very impressive, having the characters of "Red Bird," the play staged by the society last year. The officers of the society are as follows:

President	RESSA SMITH
Vice-President ...	DOROTHY DICKINSON
Secretary	LUCY SMITH
Treasurer	ADA BAIN

THE ARENA

The Arena has been re-organized this year and is now one of the active societies of the school. A meeting has been held each week and excellent work is being done by the girls along literary lines.

The purpose of the Arena is chiefly along literary lines, and to give practice in discussing questions before an audience. Its work consists in giving readings, farces, impromptu talks, music, current events, and debates. Every member must appear on the program at some time. This work is excellent training for teachers, giving them more self-confidence and ability to appear in public. The selections delivered are criticized by some member of the faculty and improvements are suggested.

There is also a social side to the Arena. Social evenings are enjoyed during the school year.

At present the Arena is planning to hold preliminary contests to consist of various things, such as, the telling of humorous stories. These contests are to be try-outs for the final contest with the Ohiyesa later on. Much is being made of this contest and it is toward it that most of the activities of the society are being directed.

The officers of the Arena for this quarter are as follows:

PresidentMERCEREAU WILLIAMS
Vice-President LAURA COOPER
Secretary HELEN COLLINS
Treasurer BEULAH LAWSON

THE TREBLE CLEF

The Treble Clef is, as its name tells, a women's organization. It is made up of the best vocal talent of the school and has at present twenty-six members. Miss Baker, who has charge of the music department in the school, directs the chorus.

The officers are:

President ADA BAIN
Vice-President MILDRED PIERCE
Secretary FLORENCE ROTHMAN
Treasurer MARY MILLER
Librarian MARION WELTMAN

The chorus has been at work on several songs, most of which are three-part selections. When the club was organized at the beginning of the year they planned to give a Christmas cantata, but later on, it was deemed wisest to give this up on account of the holiday vacation beginning earlier than it was thought.

The Treble Clef has appeared before the public twice. They gave two selections at general assembly and later they sang at an entertainment given for the benefit of the hospital fund.

The chorus girls have something which is comparatively new, namely, club pins.

A musical organization of this kind is of great value. Those who can sing are here given an opportunity to use their talent, and in so doing they afford enjoyment to others. It furnishes musical numbers for programs given by the school, thus making them more interesting. It benefits each member individually by giving training in the singing and appreciation of good music.

THE HOME ECONOMICS CLUB

Among the other organizations of our school we have a Home Economics Club.

The purpose of the club is to give information in regard to Domestic Science work for which there is no time in the regular course. Occasionally talks are given by members of the faculty.

The regular meetings are held once each month, and must be educational in nature. In addition to these, social meetings are held, in order that the students may enjoy themselves and become better acquainted with each other.

Any person who is a student in the Domestic Science or Domestic Arts course may become an active member of this organization. Others who are interested in the work may be admitted as associate members by the vote of the society.

The officers of the club are as follows:

President ALICE CHAPPELL

Vice-President VERA MUELLER

Secretary and Treasurer RUTH RYAN

Executive Council—Alice Chappell, Vera Mueller, Ruth Ryan, ex-officers, Miss Allen, who is at the head of the Domestic Science Department, and Miss Hanson, a member of the Domestic Science Faculty.

**YOUNG WOMEN'S CHRISTIAN
ASSOCIATION**

The Young Women's Christian Association elected the following officers for the year:

President ELIZABETH QUINNEL
Vice-President LAURA COOPER
Treasurer ESTHER GILL
Secretary BEULAH LAWSON

This student branch of a world-wide society is recognized as a potent factor for good of life in any school.

The zeal of its workers; the earnestness of purpose, and their enthusiasm for such a worthy cause, have won for them the due respect and admiration of the student body.

The activity of the society is evidenced by the fact that on October 14, 1914, seventy-seven new students became members of the association. In the near future a second initiation will be held and it is probable that before the year closes, all the women of S. P. N. will take a hearty interest in the work of the society.

Other noteworthy activities are the matins held each morning in the association room and the sending of delegates to the various conventions and conferences of the general society.

Two delegates represented the S. P. N. branch of the Y. W. C. A. at the Central Field Conference held at Chicago, November 6-8, 1914, meeting there with three hundred other delegates registered from Wisconsin, Illinois, Indiana, and Michigan. While in attendance they were able to hear such eminent women as Miss Pearson and Jane Addams of Hull House. This is one of the most praiseworthy organizations of our school.

THE ORCHESTRA

The Normal Orchestra is one of the organizations of our school of which we ought to be proud. At present the orchestra is composed of nine pieces. The personnel is as follows:

Piano,
MILDRED TARRANT

First Violins,
MARTIN RIESCHEL, EMIL HAFSOOS,
MARY MILLER

Clarinet,
GLEN WARREN

Cornet,
EARL EDES

French Horn,
ROSHOLT

The officers for this year are as follows:

President MARTIN RIESCHEL
Vice-President MARY MILLER
Director MISS P. BAKER
Assistant Director.....EMIL HAFSOOS

The Orchestra, which practices twice weekly, is rapidly developing, and plays at various school entertainments, and gives several dances throughout the year.

THE DRAMATIC CLUB

One of the most successful and pleasing organizations of our school, is the Dramatic Club. At present there are eighteen members of this club. Membership is attained by appearing in some play, farce or other line of dramatics. The Dramatic Club gives several plays and farces throughout the year, and has acquired an excellent reputation. Last year one of the plays produced by the club was given at several places on the Portage line, with excellent success, and Mr. Smith is coaching another play now, "The Elopement of Ellen," which it is expected will be put on in several of the towns near the city. Much of the eminent success of this organization is due to the efforts of Professor Smith, the coach. It is needless to tell one of this, for when once a play which he has coached, is produced, the audience at once realizes his success along this line. One can truly say of any play, "If Mr. Smith has anything to do with it, it will be excellent."

STEVENS POINT CHURCHES

Denomination	Location	Pastor
Baptist.....	Church Street.....	REV. JAMES BLAKE
Catholic.....	Clark Street.....	REV. W. J. RICE
Episcopal.....	Church Street.....	REV. E. C. GEAR
Lutheran.....	Strong's Avenue.....	REV. THEO. RINGEON
Methodist.....	Strong's Avenue.....	REV. F. L. HAYWARD
Presbyterian.....	Main Street.....	REV. J. A. STEMON

SIMPLE CANDY RECIPES

NUT AND FRUIT FUDGE

- ½ cup butter
- 1½ pounds sugar
- 3 ounces glucose
- 1 cup milk
- ½ cup molasses
- 4 ounces bitter chocolate
- 1 cup nuts (English walnuts or hickory nuts)
- 4 tablespoons raisins.

Put the butter into a kettle and when melted add sugar, milk and molasses. Stir constantly but gently. Cook to 236 degrees. Remove from the fire and add chocolate. When cool, cream it and add the nuts, raisins and vanilla. Pour into a pan lined with wax paper and when cool mark into squares.

ORANGE STRAWS.

- 1 cup orange
- 1 cup sugar.

Cut orange peel into strips with scissors. Put them into cold water and boil 20 minutes. Change water, boil 20 minutes more. Change water again and boil 20 minutes; this makes three boilings. Now drain and add water enough to cover and one cup of sugar. Boil until it hairs. Then roll in granulated sugar.

CHOCOLATE FRAPPE

- 2 teaspoons cocoa
- 3 teaspoons sugar
- 2 tablespoons hot water
- 1 egg yolk
- ½ cup cream
- 1 teaspoon sugar
- 1 egg white
- Vanilla.

Mix cocoa and sugar; add water gradually. Cook slowly until thick. Cool thoroughly. Beat egg whites till stiff and dry. To these add the cooked cocoa. Beat well. Beat yolks well and add cream, mixing well. Put this custard into glasses and on top of it, put the egg whites and the chocolate mixture.

CHAFING DISH RECIPES

CORN FRITTERS

- 1 can corn (2c.)
- 1 cup flour
- 1 teaspoon baking powder
- 2 teaspoons salt
- ½ teaspoon paprika
- 2 eggs.

To the corn add paprika, egg yolks, and the dry ingredients. Fold in well beaten whites. Fry in fat, being careful to brown evenly. Fill your frying pan one-half full of fat to fry the fritters in.

PRANLINES

- 1 cup powdered sugar
- ½ cup maple sugar
- ¼ cup cream
- A few grains of salt.

Boil until a soft ball may be formed in water. Cool and beat until the mixture is creamy. Add one cup of walnut meats. Drop from tip of spoon on buttered paper.

TORQUENADA

- Salt
- Pepper
- Butter size of egg.
- 1½ cups well-drained tomatoes
- 12 stuffed olives—sliced
- 1 small onion—chopped
- 3 eggs, well beaten.

Put salt, pepper and paprika in dish. Next let the butter melt. Add tomatoes and let it cook; next add eggs. Cook until you see small bits of whites.

Serve on wafers or toast.

THE JUNIOR DEBATE

The most important event of the Junior Year at S. P. N. is the annual debate which takes place alternately at Oshkosh and Stevens Point, between the debating teams selected from each of the Normals. The team which represents each school is chosen from members of the Junior class at a preliminary contest, held in the latter part of November or the first part of December of each year. Any Juniors may enter this preliminary contest and strive for honors. This year's team will debate with the team selected from the Junior class of Oshkosh Normal at the latter place sometime in March or April. The Junior debate is not a side issue in the school curriculum, but it ranks as one of the most important events. A silver badge has been offered by two of our progressive professional men as a standing annual reward to each Junior who makes the team and participates in the annual debate with Oshkosh.

Opportunity is offered to students inexperienced in debate work, who are desirous of trying out for the debating team, to receive instruction and actual experience in debate work, in the newly organized course of Public Speaking. The fundamental purpose of debating is to inspire clear, concise thinking, and the statement of these thoughts in a free and convincing manner. Public speaking in school should be encouraged because it gives the student a self-assurance which is absolutely necessary for success in either debating or oratory. It is hoped that in the future, debating will rank among the highest of honorary student enterprises.

THE ORATORICAL CONTEST

Among the most important events that take place during the school year is the State Inter-Normal Oratorical Contest, held annually at some Normal in the state. This year the contest will be held at Whitewater. There is perhaps no greater honor to strive for, while at S. P. N., than that of being the school orator. The preliminary oratorical contest is usually held in January, at which time the representative and alternate are chosen to represent S. P. N., in this contest. The contest is not limited to members of a certain class, but is open to any student in the entire school. This is an important fact to be borne in mind by the younger classmen. Get out and put forth your most conscientious effort, do not be discouraged by failure to win at the first trial, but plan on being a stronger contestant next year, because of this experience. Only when the above condition exists, can the school hope to rank among the first three in the state contest. Perhaps there has not been as much active interest shown by the students and faculty along this line as there might have been, but with the constant increase of enthusiasm in the school and community, the Stevens Point Normal can look forward to sure victory in the near future.

THE NEW ADDITION

The new addition to the Normal will be completed about March 1. It will match the west addition except that it will be thirty or forty feet deeper. The cost will be eighty-five thousand dollars.

The addition will be used with the exception of one room, for the Domestic Science department. This room will be a fine new auditorium, having a capacity of eight hundred, and will be fitted with opera chairs. The stage will be arranged with curtains and fixtures so that plays may be given without the inconvenience that has formerly hampered their presentation.

The rooms used for the D. S. department will be fully equipped in every way. Last spring the board of regents sent President Sims and Miss Allen, the director of the department, to inspect the schools in the East, in order that the best equipment possible might be obtained. When the new addition is completed and work is under way, Stevens Point will have the strongest and best equipped D. S. department of any institution of learning in the state. This is an immense undertaking, and one that should receive the student's highest interest. When you are asked about the school do not forget to tell of the rapid strides that have been made in regard to the buildings, namely, the new addition, the domestic science cottage, and the new dormitory, which will be erected in the near future. At the completion of this building we will have one of the largest, best equipped, and most pleasant Normal schools in the state.

THE DOMESTIC SCIENCE COURSE

One of the most important courses we possess in our school is the Domestic Science course. Here girls are trained in the "art" of good housekeeping. Our enrollment in this course is the largest of any other course, for we have not only drawn students from the surrounding locality, but also from other Normals, and from other states. Every Normal school in the state has some special line: as manual training, agriculture, etc., and it fell to our lot to have domestic science. We possess something which no other school in the state has—two cottages for the practical application of this art. There are three courses in this subject—a two-year course for high school graduates, a three-year course for high school graduates, and a five-year course for students who have come from the grades. Every year our enrollment is being increased mainly through the agency of the possibilities which this course extends to young women. In the new addition, which is rapidly nearing completion, a large part is devoted to rooms for the study of this subject. We were sorely in need of more room because of the aforementioned large number enrolled in this course. The Seniors of the course must serve luncheon to several groups of faculty members, and must arrange the menu, do the serving and keep the cost below a certain amount. All this tends to develop economy. We sincerely hope to see the course grow larger yearly when more room is obtained.

H A N D B O O K O F S . P . N .

OUR FACULTY

Local Regent

GEO. B. NELSON

1914-1915

JOHN F. SIMS, President,
Pedagogy. Science of Education.

FRANK N. SPINDLER, Vice-President,
Psychology. History of Education. Methods.

BESSIE M. ALLEN, Director,
Domestic Science and Domestic Art
Departments.

ALFRED KUYGENDEL,
Grammar and Arithmetic.

M. PHENA BAKER,
Music.

MAUD BREWSTER,
Juvenile Literature, Composition.

GUY E. ELIASON,
Manual Training and Mechanical Training.

EUNICE BRONSON,
Physical Director for Women.

JOSEPH V. COLLINS,
Mathematics.

GARRY E. CULVER,
Geology, Chemistry.

HAND BOOK OF S. P. N.

THOMAS ROGERS,
Assistant Science Teacher.

RAYMOND FAIRCHILD,
Biology, Dietetics, Sanitation, Physiology.

ELEANOR FLANAGAN,
Drawing, Construction.

GENEVIVE GILRUTH,
Latin and English.

NANNIE GRAY,
German.

LAURA HANSON,
Assistant Domestic Science and Domestic
Art.

ALFRED J. HERRICK,
Physics, Agriculture.

H. S. HIPPENSTEEL,
Literature, Rhetoric.

MERLIN M. AMES,
Civics, U. S. History.

JOHN PHELAN,
Director Country School Teachers'
Training Course.

GEORGE CORNEAL,
Physical Director for Men.

ERNEST T. SMITH,
History, Economics, Sociology.

CHARLES F. WATSON,
Geography.

H A N D B O O K O F S . P . N .

TRAINING DEPARTMENT

FRANK S. HYER, Principal.

PRUDENCE CUTRIGHT,
Assistant Critic Teacher, Primary Grades.

BERTHA B. GOODYEAR,
Critic Teacher, Sixth and Seventh Grades.

HELEN PARKHURST,
Critic Teacher, Primary Grades.

HULDA SCHRODE,
Critic Teacher, Intermediate Grades.

EDITH WHITNEY,
Critic Teacher, Intermediate Grades.

MINNIE WILSON,
Critic Teacher, Eighth Grade.

MARJORIE WINTER,
Kindergarten.

MRS. ELIZABETH SHORT,
Librarian.

LULU MANSUR,
Assistant and Text Librarian.

OLIVE A. ANDERSON,
Clerk, Treasurer.

ETTA BLOYE,
Assistant Clerk.

ATHLETICS

The general opinion throughout the country seems to be that the Stevens Point Normal is a minus quantity when it comes to athletics. This we all know is far from true, but nevertheless, this opinion has done some damage to the school in the line of bringing athletes here. We do not propose, however, to take a back seat under any condition. Some of the young men who are attending Normal now, are among the finest athletes in the country. We count for quality and not for quantity. It does not take fifty men to play football or even eleven to make the best basketball team in the country.

The average weight of our football men was one hundred and seventy-five pounds. They all possessed energy and spirit in proportion. The coach is one of the biggest football men in the country and he was assisted by two of the biggest men in the city. The result was a winning team, even though some of the men started practicing this year for the first time. Many had not seen games enough to know what those fellows were doing with that little ball.

Most of the men who played this year will be back again next year, and we expect to see a team that will not know what "defeat" is. They saw two defeats,—just enough to make the boys do their best in the other games. In all there were twelve touchdowns made against them while they scored twenty against their opponents.

HAND BOOK OF S. P. N.

Now that the basketball season has opened the interest naturally goes to basketball. The boys have been practicing for some time under the direction of our coach, Mr. Corneal. We have five men who played on the team last year, one who played on the Bushy Business College team, and one who has won fame on the floors of Wausau. Others played on the second team last year or have played on high school teams. With this material and coach, to say that we expect the state championship is putting it mild indeed.

Another winning team will be the baseball team. We have the stars of the surrounding high school teams and many who played on the team last year. Baseball seems to have taken a slump, but it will not take long for it to regain its former position with the material now in the school. This does not mean that we had a losing team. The Stevens Point Normal does not believe in that sort of a team and will not have the school represented in that way. During the entire season last year we lost but one game. We will have to give the boys of Wautoma credit for that game, though it is given rather reluctantly, as the score was in our favor at the end of the seventh inning by three runs.

Another annual event is the track meet held by the Normal school for the surrounding high schools. Although the Normal students do not take part in the contests, they show their interest either for the Stevens Point high school or the representatives of their home school. The meet is called the Central Wisconsin Interscholastic Meet and

is participated in by all the leading high schools of central Wisconsin. The meet will take place for the third time in the spring. During the past two years the honors have been won by Wausau, and a hard fight is looked forward to for this year. A large cup, now in the possession of the Wausau boys, will be given to the school which wins first place at the meet for three years. The Wausau boys will therefore exert all their energies in winning first place for the third time in the spring, and thus winning the cup for a permanent possession.

The Normal students will compete in three or four meets in the spring. We have some fine material and expect to put Stevens Point at the head of another list in the athletic line, before the end of the school year. There were fewer boys in school last year than there are now, and track gave way to baseball. This year we will have enough for both without sacrifice to either.

Another feature of spring athletics is the girls' basketball tournament, which takes place immediately after the close of the boys' season. In this contest the teams represent the different classes of the school. Last year the cup was won by the Sophomores, and the same team now in the Junior class expects to do the same this year.

The boys have a similar contest in indoor baseball.

Interest has been revived in tennis and during good weather the courts are continually occupied.

FOOTBALL

The chief outdoor sport of the school as well as of other schools is football. We started the season with a bunch of men who had never played together before. Many of them had never played at all. On the other hand, we had some who were expert football players. The fullback, Joseph Pope, played on the Wausau high school team last year and was made captain of the team this year. Harold Brady, one of the fastest men in the school, was elected to the position of captain, but was not allowed to play because of his health. Our right halfback was one of the fastest men in the country. Van Tassel was the man who was called on in a pinch. The pinch runner, in other words. The left half was filled by Prosper Kluck, another of our fast men. His knee was injured, however, in the third game, and he was out of it for a few weeks. Henry Shadewald is considered one of the best ends in the state. He can break up as much interference as three ordinary men. When he started across the line he knew where to go and he went hard. Edes played the other end.

There were Hills, Blume, Kluck, Van Tassel and Edes played on last year's team, while Murphy, Patterson, Thorsen, Held, Muller, Pope, Gustin, and Shadewald were new to our team at the opening of the season. Gustin, however, played with the team of nineteen-eight, and Patterson played one game with the team last year.

The opening game of the season was with the local high school. There has always been a rivalry between the schools when it comes to football, so both teams entered the game confident of victory. The first touch-down, the one which won the five-pound box of candy from the Palace of Sweets, was made by Pope. The high school had the ball, and after failing to make their gain, tried to punt. Pope got through the line in time to block the ball. He caught it at the same time and ran about forty yards for a touch-

down. Before the end of the game Van Tassel made a drop kick and another touch-down, making a final score of 15 to 0.

The two following home games were with St. Norbert's College and Manawa High School. Both games resulted in victories for the Normal, the scores being 14-0, and 42-0, respectively.

One of the closest games of the season was with the Wausau High School, at Wausau. Neither side was able to make a touchdown, but Van Tassel's accurate drop kicking scored six points for the Normal and won the game.

For two weeks Kluck was out of the game and Pope was hurt, while two or three other men were in no condition to play football. It was on those two weeks that we suffered our two defeats. The first was at La Crosse, when our boys lost by a score of 38 to 0. The students were rather down-hearted when they heard the score the next morning after a false report said that the Normals had won. The next game was lost to River Falls, at River Falls, the score being 40 to 0.

The contest with Superior was after the cripples got back into the game. Although we won by a score of 26 to 7, the game was close from start to finish. In the last quarter the score was 19 to 7, with Superior gaining fast, when our men caught a pass and with some excellent interference ran fifty yards for a touchdown. The goal was kicked, making a final score of 26 to 7.

The last game of the season was with Stout Institute of Menomonie and deserves special mention.

Stout came here with a big reputation, having beaten La Crosse 6 to 0 and having held Hamlin College of Minnesota to a score of 7 to 0, so we naturally looked for a hard game.

H A N D B O O K O F S . P . N .

The weather conditions were anything but good. A slushy snow covered the field and made it very difficult for the players.

Stout started like a whirlwind, but after gaining enough to put them within our eighteen yard line, they encountered a stone-wall defence and lost the ball on downs.

The Normal kicked, but it was a poor attempt, and Stout had the ball on the thirty yard line. After making a short distance, they lost the ball again.

At the beginning of the second quarter the Normal began a steady march toward the goal line, which resulted in a touchdown. Needless to say, the Normal rooters went wild. Goal was missed, due to the slippery condition of the ball.

The third quarter saw nothing spectacular, but in the Fourth Stout attacked the Normal defence viciously and crumbled it before their terrific line plunges, crossing our seventeen yard line, where they were again stopped.

Then began an eighty-three yard procession down the field which should go down in Normal history. It was done by straight football, and was the best exhibition seen here in twelve years—to quote some of the town people.

Goal was again missed, and time was soon called, leaving a score of 12 to 0 in our favor.

All in all the Normal had a glorious season, winning six of the eight games. Great credit is due to the coaches and team for producing some football history that we are not ashamed to acknowledge. Hats off to the following men: Shadewald, Gustin, Blume, Reilly, Thorson, Murphy, Edes, Held, Hills, Moeller, Kluck, Pope, Van Tassel, Patterson, Corneal, Watson, and Fairchild.

BASKETBALL

After a successful season in football, the basketball season opens up with fine prospects for a championship team.

The basketball season being longer than that possible for any other athletic sport, makes it of vast importance that S. P. N. should put out a team that is capable of enduring a hard grind.

In Coach Corneal, we have a man who has had the experience and who has the ability to direct a basketball squad of first-class calibre. Coming here from the University of Michigan, highly recommended, he is proving in the daily practices that he will turn out a quintet of real basketball men.

The material to pick from was never better. In Captain Beggs at the head of the team, we have a man of no small ability. He plays a game at guard that sets an example for any aspiring candidate to look up to. He certainly will lead the basketball squad in a way that will make the other Normal teams no end of trouble.

In Brady, also of last year's team, we have a guard who plays the game with a snap and spirit that will spoil the good intentions of many opposing forwards.

In Edes at center, we have a man of vast experience; one who can shoot baskets with unerring accuracy, and also covers the floor with wonderful speed.

In Reilly, we have a man who has the size and speed of a genuine basketball player, a

HAND BOOK OF S. P. N.

veteran of last year's team, who has the knack of rolling 'em thru, in a way that warms the heart of every rooter.

In Pope, we have a man who plays with a determination that proves that his experience at Wausau will be a big asset to S. P. N.

In Peterson, from Iola, we have a player of natural ability, who is slippery on the floor, and passes the ball in a way that is an important cog in basketball machinery.

In Kluck we have a man who is always there with the goods, and one who is capable of breaking up plays that appear formidable to our men.

With a second team squad consisting of Patterson, Ellis, Wysocki, Marsh, Held, Hamilton, Thorsen, Rabenstein, and Newton, the first team have skirmishing opponents that make them hustle in the daily practices. This is one of the essentials to championship basketball, and we expect results that will make the rooters of S. P. N. happy at the close of the season.

The various classes have high anticipations for their respective teams, when the tournament is staged the latter part of the season.

The girls are preparing for class teams for the tournament, which will prove highly interesting. With many candidates of basketball experience they are expected to play the game with an enthusiasm becoming to S. P. N.

And now let everybody boost, push and pull—altogether to make the basketball season of 1914-'15 the BEST EVER.

The schedule is as follows:

Date	Team	Place
December 5.....	Iola College	S. P. N.
December 12.....	Lawrence College	Appleton
December 18.....	Bushey's Business College	S. P. N.
January 8.....	Stout Training School	Menomonie
January 15.....	Wausau High School.....	S. P. N.
January 16.....	Grand Rapids	Grand Rapids
January 22.....	Neilsville, Company A.	S. P. N.
January 29.....	River Falls	River Falls
February 5.....	La Crosse	La Crosse
February 19.....	La Crosse Normal.....	S. P. N.
February 26.....	Stout Training School	S. P. N.
March 5.....	Ripon College	Ripon
March 12.....	Ripon College	S. P. N.

BASEBALL

It is exceedingly hard to develop a good baseball team at S. P. N., due to its season being the same as that of track, and because of the small number of boys who are interested in athletics. However, it seems that the other Normals of the state experience the same difficulty, because one seldom hears of a Normal putting out a good baseball team. Track is considered to be much the more important of the two sports, and is usually given the preference in view of the fact that there is not enough material for teams in each line. Although, for the last three years, the Normal has put out a fairly well equipped team, it has not accomplished much, because of the difficulty of arranging games, and securing sufficient practice. The Normal has not a good diamond of its own, and the diamond at the fair grounds is used by the high school boys. Another signal reason for the failure of this sport is the lack of enthusiasm shown by the students.

Why cannot the school support football and baseball as well as it does basketball? Some say that those games are too hard to learn. If that is the case, I am sure you can find several people who would be glad to gain your presence there by an explanation of the game.

TRACK

As the number of boys enrolled in our school has not been very large, it was usually decided, during the last few years, to put out a baseball team instead of trying to put out a track team. Track requires so much more training than baseball does that after a hard season in football and basketball the men do not care to spend the beautiful spring evenings in vigorous practicing for a meet. However, this year, with a larger number of boys than we have hitherto had, and the services of an efficient coaching staff, composed of three of the biggest men of the school, we hope to turn out a track team that can successfully compete with any of the other Normals of the state. Track is a growing sport in all of the Normals, and prospects are good for a meet between our school and Whitewater Normal. It is excellent discipline for a young man because he must learn to deny himself of many things in the line of sweetmeats, which if he were to eat would cause a decided lack of wind. "Wind" and "Stamina" are the two things most important for a track man to possess. If he has these he may hope to be successful, because he can acquire the form later. Let us hope that in the future the Normal will put out a track team that will rank as an equal with the football and basketball teams.

GIRLS' ATHLETICS

Not only has great interest been shown in the athletic contests participated in by the young men of the school, but there is also great interest shown in the girls' athletics. This consists of a basketball tournament held every spring, in which teams from each class of the school engage in contests to decide the winner, and possessor of the trophy. This trophy consists of an elegant silver cup presented by Dr. Bischoff, which is a permanent possession of the school, and is transferable from class to class according to the winners of the tournaments. Dr. Bischoff also presents the winners of second place with a two-pound box of candy.

The girls begin practice early every year, and put in full time from then until spring trying to develop good material, and select the best team to represent the class. Last year the Sophomore girls were victorious, and as the same team is included in the Junior class of this year, we are naturally looking forward to victory. The development of a girls' basketball team is a difficult proposition, so Miss Bronson, the physical director for women, has quite a task before her. Last year, however, she put out a couple of teams which were a credit to the school. When the season for the tournament comes, let us not forget the loyalty with which the girls supported football and basketball, and everyone be on hand to cheer, for the girls deserve great praise for their rivalry and conscientious effort to put out a good team.

ADVICE TO JUNIORS

When you have graduated from high school decide at once to enroll as a Junior at S. P. N. Arrive in Stevens Point and at the Normal building at the date set for enrollment. Under no circumstances arrive a day or two late, as you will miss many benefits by so doing. If you are musically inclined, bring your voice or other musical instruments with you, as they will be appreciated. Upon arrival, proceed at once to the office and pay your entrance fee to Miss Anderson. You will then be considered a member of the Junior Class of S. P. N. Always lift your hat or bow to all distinguished looking personages you happen to see in the halls, or on the campus; as you may be certain that they are either Seniors, members of the faculty or janitors. Do not stand around in the hall trying to flirt with strangers of the opposite sex, as they may turn out to be instructors. Do not ask foolish questions of your neighbors. Do not wear your loudest necktie or ribbon the first week. Let the school get used to you gradually. Do not brag of your home town or your high school achievements unless you can substantiate your remarks by the testimony of at least three impartial witnesses. Do not turn on the fire hose, or blow out the gas jets. Do not forget that you are now a Normalite, and proceed with all the dignity required by the responsibility of the situation. Get your books as soon as possible and begin to study. Then study some more, because if you gain a reputation as a good, reliable student during the first month, you will most likely be able to slide thru the rest of the semester on your first months' work. Attend your first Junior

HAND BOOK OF S. P. N.

Class meeting and try to be elected as one of the class officers, treasurer preferred. Help to adopt class colors and the next night see that the Normal building and grounds are tastefully decorated with these aforementioned colors. It is not considered good taste, however, to decorate permanently with paint. If any Senior class colors are seen, tear them down, and if anyone attempts to insult the Junior colors, avenge the insult with blood.

Do not fail to join one of the literary societies, and so get your picture in the Iris. Always leave the building at the sound of the first gong, as to do otherwise, is to court disaster at the hands of the janitor. Do not try to improve the statues with the use of a lead pencil. Don't fuss all the time, as sleep is needed when you go to school. Always be on time for general exercises, and be sure to sing as directed. Do not fail to attend all football and basketball games, and when there, proceed to yell for the team. Last, but not least, BOOST FOR THE SCHOOL, and when you go home bring back another student or two with you.

If you do all of these things, you will be beloved by your schoolmates and teachers and will become exemplary models of behavior,—like the Seniors. "A WORD TO THE WISE IS SUFFICIENT."

THE NORMAL LECTURE COURSE

One of the most interesting features of Normal life is the Lecture Course. This is managed by the Normal Entertainment Committee, which is composed of eight members of the faculty. As a result of the interest and activity of this committee we have a much improved course over that of other years. While the cost of the talent has increased by forty per cent, the price for the season ticket remains the same. The townspeople show a remarkable response, and one or two hundred more season tickets could have been sold had the size of the opera house permitted. The future policy will also be to hold those entertainments at the opera house. It is planned to make the course still better next year.

The 1914-1915 lecture course was opened by the Thomas Orchestra, consisting of sixteen members of the Chicago Symphony Orchestra, founded by Theodore Thomas. For all those who attended, the evening of October 2 was a memorable one. The selections from masters such as Grieg, Mendelssohn, Schubert, and Beethoven were of such a nature that the appeal to the audience was strong and compelling. Perhaps the Entr'acte Gavotte, by Gillet, won the greatest measure of approval.

The next number of the course was dated for October 22. This was another high-class musical entertainment given by the International Operatic Company. All in all, the program was full of good music. Especially was this a night for solo numbers, and every

H A N D B O O K O F S . P . N .

member of the company deserved enthusiastic applause. One number of particular interest was the presentation of the second act of the opera "Martha."

Elias Day, the noted impersonator, delighted a large audience at the opera house, Friday evening, November 20. This entertainment was the third number of our Lecture Course. Mr. Day's character delineations, of which his program largely consisted, were remarkably well done. He impersonated in turn the following characters: An Italian fruit vender; a dignified Southern gentleman; an Americanized Swede, and a jolly Dutchman. His make-ups were accomplished on the open stage without delay in the program. There was hardly a moment in which the audience did not secure new evidences of the splendid talent of the mass before them.

The fourth and last number of the series of entertainments will be given by Mr. Russell Conwell, orator, January 14. He comes to Stevens Point to give his famous "Acres of Diamonds" lectures, and will most surely do his part in maintaining the high standard fixed by the previous numbers of the course.

Members of Normal Entertainment Committee:

1. MISS ALLEN
2. MISS BAKER
3. MISS BRONSON
4. MISS GRAHAM
5. MISS PARKHURST
6. MR. AMES
7. MR. FAIRCHILD
8. MR. PHELAN

THE VISITORS OF S. P. N., 1914

During the first semester of the year 1914 a number of people of note have made their appearance at Stevens Point Normal. Some of these people gave a short talk to the student body at the general exercise period in the morning. A new speaker is always welcomed by the students with great pleasure. Not only did new speakers appear on the platform, but old students also paid a visit to their Alma Mater. Among the last named group we have Strand and Cummings. They are old graduates of S. P. N., who visited us in October.

Claude Burns, of Walworth, Wisconsin, spent a few days with his Normal friends.

The Evangelist, Mr. Raybourne by name, and Reverend Stemen of the Presbyterian Church of this city, were present at the opening exercises on one occasion. Mr. Raybourne spent about six weeks in the city doing evangelistic work at the tabernacle. On that visit he delivered a talk which inspired all students to endeavor to do their best. He gave examples to show that one can not attain high ideals unless we strive to accomplish great things. He also gave an address to the young women's society.

Mr. Fairchild's father also delivered a very good talk on education on one occasion.

We also had with us a Mr. M. Beck of Indiana. He was a former student of S. P. N., and his talk was very interesting. Perhaps one reason why it appealed to all students

HAND BOOK OF S. P. N.

was because he told how he feared Mr. Culver, and doubted whether he failed in Chemistry or not. His trials in school seemed much the same as many students of to-day.

A traveling book agent also gave us a short speech on that same morning.

One Friday afternoon in November, Miss Little of Chicago addressed the teachers interested in primary work. Her subject was, "The Materials of the Montessori System."

Herbert Steiner and wife visited the city over Sunday, at Mrs. Young's, on Church street. Mr. Young is president of the school board in this city, and Mr. Steiner was a member of the class of 1910.

There was a representative of the Jahn-Ollyer Engraving Co., of Chicago; also a representative of the Oshkosh and Minneapolis bureaus of engraving; and a representative of the Castle-Pierce Printing Co., of Oshkosh.

Mr. Henry Johnson and Meryle Fisher visited Normal the last week in October. "What was the object?"

D. L. Auld Co., of Columbus, Ohio, had a representative selling pins and class rings, engraved invitations, and stationery here. The Senior class made a selection from his collections.

ENROLLMENT, 1914-1915

During the first quarter, 434 students enrolled, which is the largest enrollment in the history of the school, and a gain of 2 over last year. Of this number 428 represent fifty-five different counties out of the seventy-two in the state, while Michigan and Illinois have two representatives each, and Iowa and Minnesota one each. The counties having the greatest number of representatives are: Portage, in which the school is located, 198, Marathon 25, Wood 23, Waupaca 16.

Each quarter new students are enrolled and up to date, the 449 mark has been reached. When the new annex and the model cottage for the Domestic Science Department are completed, it is hoped by the faculty and students alike, that the total enrollment will be at least 500. To this end, the matter has been taken up by the student body, committees have been appointed in each class and there is an enthusiastic spirit of rivalry between classes as to which one shall receive the credit for inducing the greatest number of new students to enroll before March 1, 1914.

There is such a variety of courses offered that students can take up almost any line of work. Ninety-one are enrolled in the Domestic Science Department, which is along lines of latest and best knowledge and experience; some of the students coming from cities where other Normals are located, even from other states because of the special advantages of this course in this school.

HAND BOOK OF S. P. N.

Over one hundred are enrolled in the department for the training of primary teachers, which is directed by Miss Helen Parkhurst, who, during leave of absence, studied in Rome with Madam Montessori.

There are seventy-nine in the rural school department, which offers special opportunities for the training of those who expect to teach in rural schools.



THE COTTAGE

This year our Normal school is undertaking something which no other Normal school in the United States has tried. It is the building of a double cottage to be used by the girls of the Domestic Science Department.

This cottage is really two in one. It is to be occupied by two sets of girls, there being four girls in each cottage. While they are in the cottage they will look upon it as their home. They will do all their own cooking, baking and cleaning as well as buying their own goods and keeping accounts.

Only Senior girls are to live in the cottages and the time that each group will occupy their cottage will depend on the number of Seniors in the Domestic Science Department.

The cottages are to be furnished with all the conveniences of a modern house.

We expect these cottages to be of great benefit to our students in the Domestic Science Department; because, while occupying them, the girls will be able to put into practice, in the most practicable way, all the knowledge they have gathered from their classes up to that time.

NEW MEMBERS OF THE FACULTY

Ten of the faculty members are new this year.

Mr. George D. Corneal, before coming here, was physical director in the schools of Rock Island, Illinois. He has also coached in the Boise High School, Idaho, and has assisted Prof. Keene Fitzpatrick at the University of Michigan.

Mr. Alfred Kuykendall, graduate of the Platteville Normal, the University of Southern California, the University of Wisconsin, and one time superintendent of one of our Wisconsin counties, has been filling the position vacated by Mr. Ames.

Mr. Eliason, who is taking charge of the Manual Training Department, is a graduate of Stout Institute, Scandinavia Academy and a high school in North Dakota, and has been manual training instructor in Birmingham, Alabama, in Lake Geneva, Wisconsin, and in the Dunn County School of Agriculture.

Miss Ada Irwin, assistant in the Domestic Science Department, was formerly instructor of Domestic Science in the South Dakota College of Agriculture, of which she is a graduate. Miss Irwin has a B. S. degree from the Teachers' College at Columbia.

Miss Jennie Graham, assistant in the Rural School Department, has been teaching literature in the local High School for the past three years. She is a graduate of the Iowa

H A N D B O O K O F S . P . N .

State University and has spent one summer at Columbia University.

Miss Bertha Goodyear, a graduate of the DeKalb, Ill., Normal, has taken the work of critic teacher in the sixth and seventh grades after having filled a similar position in the State Normal School at Aberdeen, S. D.

Miss May Roach, who has charge of the rural observation school, is a graduate of the Stevens Point Normal and has successfully served as a principal of the state graded school at Cable, Wis., besides having other experience in the district schools.

Mr. Thomas A. Rogers, of Paxton, Ill., who has earned his Bachelor of Science degree at the Illinois Wesleyan University at Bloomington, and has had several years experience in teaching science in high schools, has taken up his work as assistant in the Science Department.

Miss Winters, our new Kindergarten Supervisor, is a graduate of the Milwaukee Normal and has had practice in the schools in Berlin, Waupun, Madison, and Beaver Dam.

Miss Edith M. Whitney of St. Cloud, Minnesota, comes to us as critic teacher for the third and fourth grades after filling a like position in the St. Cloud Normal School, of which she is a graduate.

